

2016 RAM Promaster 1500 136WB High Roof cargo van conversion workshop

VIN: 3C6TRVBG9GE100665

Functional as a mobile workshop or as a head start for a "Van Life" camper conversion.

Asking \$31,950 (Negotiable)

Mileage: 114732 on 2024-03-21

Tires:

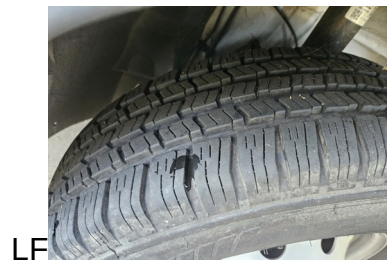
LF: DOT Date: 1221

RF: DOT Date: 1121

RR: DOT Date: 2018

LR: DOT Date: 4518

Tread



From Dealer Sticker

RAM 1500 PROMASTER C/V HR 136" WB
Exterior Color: Bright White Clear Coat Exterior Paint
Interior Color: Gray Interior Seat
Interior: Vinyl Bucket Seats
Engine: 3.6-Liter V6 24-Valve VVT Engine
Transmission: 6-Speed Automatic 62TE Transmission

STANDARD EQUIPMENT (UNLESS REPLACED BY OPTIONAL EQUIPMENT)

FUNCTIONAL/SAFETY FEATURES

Ram ProMaster Vans are Job-Rated®
Advanced Front Airbags
Supplemental Front Seat-Mounted Side Airbags
Supplemental Side-Curtain Front Airbags
Electronic Stability Control
Brake Assist
Hill Start Assist
All Speed Traction Control
Electronic Roll Mitigation
Tire Pressure Monitoring Display
4-Wheel Anti-Lock Disc Power Brakes
Medium Duty Suspension
Rear Back-Up Camera Prep Kit
24-Gallon Fuel Tank
180-Amp Alternator
95-Amp Battery
Remote Keyless Entry

INTERIOR FEATURES

Forward Cabin Air Conditioning
AM/FM/MP3 Radio
4 Speakers
Media Input Hub
12-Volt Power Outlet Mounted in Instrument Panel
4-Way Adjustable Driver Seat
4-Way Adjustable Passenger Seat
Power Windows with Front One-Touch-Down Feature
Telescoping Steering Column
Cargo Lamp

EXTERIOR FEATURES

260-Degree Opening Rear Hinged Doors
16-Inch x 6.0-Inch Steel Wheels
225/75R16C BSW All Season Tires
Full Size Spare Tire
Front Clearance Lamps
Rear Clearance Lamps
Halogen Headlamps
Manual Fold-Away Mirrors
Tinted Windshield Glass

Dark Gray Grille
Dark Gray Front Fascia
Dark Gray Rear Bumper

OPTIONAL EQUIPMENT (May Replace Standard Equipment)

Vinyl Bucket Seats
Customer Preferred Package 21A
Trailer Tow Group by Mopar®
Class V Receiver Hitch
7 and 4 Pin Trailer Tow Wiring Harness by Mopar®
Interior Convenience Group
Underseat Storage Tray
Overhead Storage Shelf
Locking Glove Box
Driver A-Pillar Document Holder
Cargo Convenience Group
Cargo Net
Side Wall Cargo Tie Down Rings
Power Folding / Heated Mirrors
Speed Control
Uconnect® 5.0
GPS Antenna
5.0-Inch Touchscreen Display
Media Hub (USB, Aux)
Steering Wheel Mounted Audio Controls
Integrated Voice Command with Bluetooth®
ParkSense® Rear Park Assist System
ParkView™ Rear Back-Up Camera
99591B

This vehicle has an OEM Towing Package with a class V hitch.

The transmission has been ENTIRELY rebuilt to OEM specifications on 21Apr2022 by Breeden Dodge-Chrysler-RAM, Ft. Smith, AR.

The vehicle has been thoroughly inspected by Breeden Dodge Chrysler Jeep RAM, Ft. Smith, AR, and is in top mechanical condition.

This vehicle has a custom-built cargo bay workshop.

There is a bulkhead panel between the cab and the workshop. This provides additional security for the cargo bay compartment. However, the panel is designed so a door can be installed if desired.

Cab:

Includes:

[Windshield Sunshades](#)

[Cab Window Air Vent Inserts](#) allows for securely venting the vehicle while preventing rain or insects from entering.

Workshop:

Installed: [Fresair F6](#) Air Cooling Unit.

Installed: [MAXXAIR 0007000K MaxxFan Deluxe Fan with wireless Remote](#) and [wired wall control unit](#). MaxxAir 0007000K MaxxFan opens automatically based on your thermostat setting, and can run during rain and while driving.

[KILMAT 80 mil sound deadening sheets](#) applied to workshop walls.

Two space-separated layers of [Reflectix reflective radiant barrier Insulation](#) applied to the workshop walls.

[Unaka 8020 Roof Rack](#) with wind fairing

12 Volt System in the workshop including a

==> [JITA 12V 200Ah Plus LiFePO4 Battery](#) that is optionally charged from the engine, "shore power," or solar according to switches you set.

==> [Renogy 500A Battery Monitor](#)

==> [Renogy 12V 60A DC to DC On-Board Battery Charger](#)

==> [JJN 12 Volt Solar Panels -Two 100 Watt 9BB Monocrystalline Panels with Half Cut Cells](#)

==> [Renogy Li 30 Amp MPPT Solar Charge Controller](#)

==> 12V Circuit breakers, fuses, and manual switches between appropriate components.

==> Over-gauged wiring throughout the entire 12V system.

[Wokyy 12V 20A LiFePO4 Battery Charger](#)

Work Area Lighting in three modes: Ceiling, Desktop, and Desktop Fill from switches on a custom control panel.

The 12V system can power both 12V and 5V devices, complete with appropriate voltage regulators and step-down converters.

The control panel on the 12V system is set up to provide power to a 12V mini computer system with a 5V monitor, control power to the [FresAir F6](#) Cooler, the [MaxxAir](#) Vent fan, and the workshop lights. Additional switches and circuits can be easily added.

A [2000W DC to AC Modified Sine Wave Power Inverter](#) and a [500W DC to AC Pure Sine Wave Power Inverter](#) are included.

Custom detailed documentation for the entire 12V system included.

[Thunderbolt Deadbolt](#) system for side and rear doors including independent [Thunderbolt Remote Control](#) system.

Note: The Thunderbolt Deadbolt system is powered by the vehicle starter battery, not by the 12 Volt Workshop system.

Also note: If the bulkhead is removed or a door installed in it, you should consider installing the Thunderbolt Deadbolt system for the cab doors to maintain the level of security.

Power Inlet Port plug to provide “shore power” to the van.

[Prime Design Rear Door Ladder](#) for roof access.

L-shaped Workbench

Shelves for tools

Cushioned floor

Three types of lighting: Ceiling, Workbench, Workbench Backfill

Optional DC Computer System Available: \$400

[Mele N4000 4GB/128GB fanless minicomputer](#)

Additional 512GB MS30 M.2 2280 SATA III 6Gb/s SSD drive

Two 4 port USB hubs

LG BDXL External Blu-Ray ROM drive

15.6” 1080 5V monitor

Cables

Monitor Mount

Wired mouse

Wired keyboard

Optional Workshop Stool Available: \$200

[DeWalt Adjustable Shop Stool](#) with upgraded [Polyurethane Precision Ball Bearing Wheels](#)